

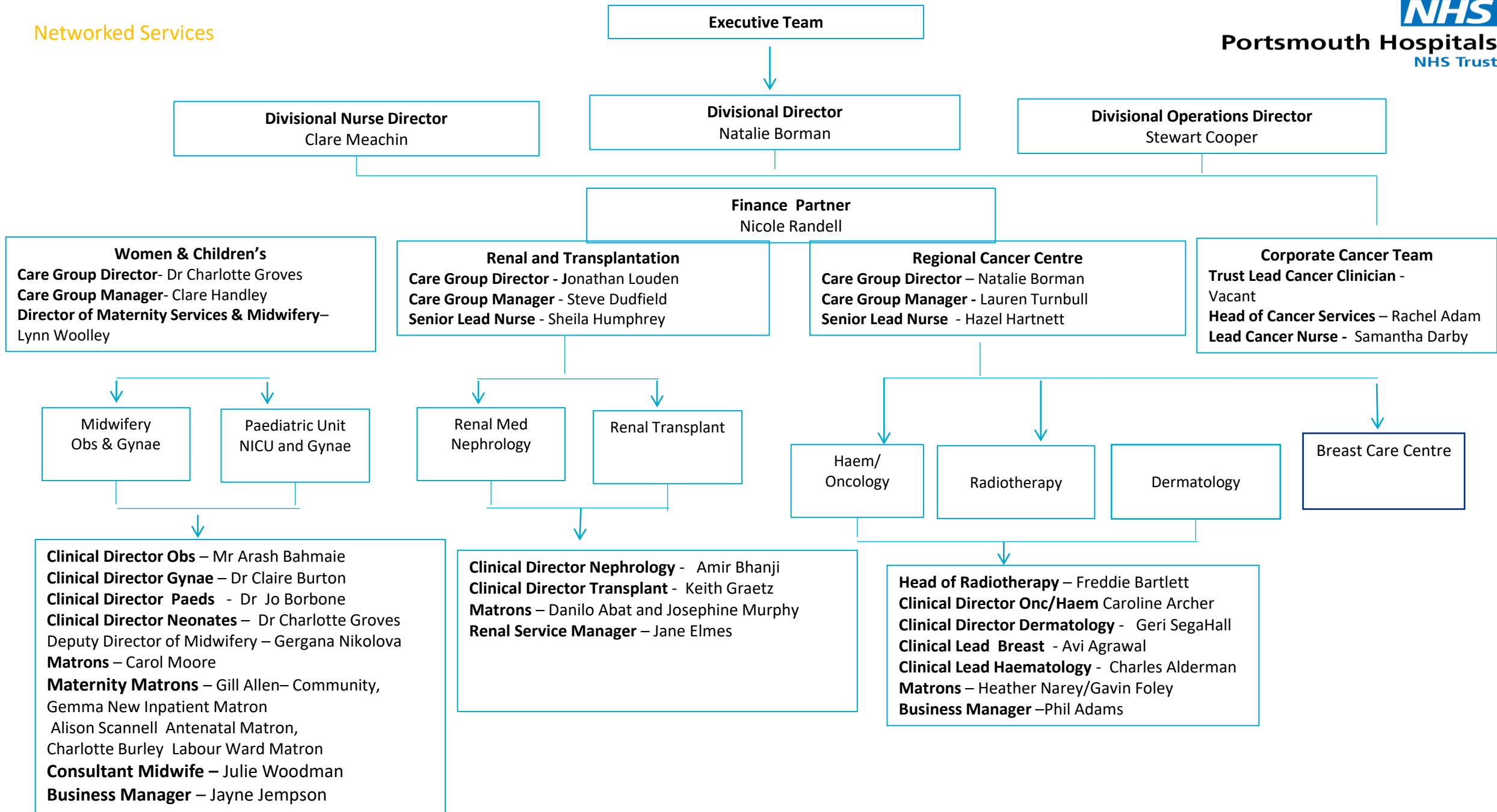


Portsmouth Hospitals
NHS Trust

Networked Services

Organisational Chart

Working together To drive excellence in care for our patients and communities



Women & Children's Care Group

Care Group Director – Dr Charlotte Groves
Care Group Manager – Clare Handley
Director of Maternity Services & Midwifery– Lynne Woolley
Care Group Medical Governance Lead – Dr Sophie Robertson
Business Manager NICU & Paeds – Jayne Jempson
Business Manager Obs & Gyne – Barbara Skinner

Paediatric Unit

Clinical Director – Dr Joanne Borbone
Matron – Carol Moore
Specialty Governance lead (Nursing & Medical) - Judith Scanlan and Sophie Robertson, Tracey Thomas

A7 Starfish (Medical Ward) 24 beds

A8 Shipwreck (Surgical and Day case) 18 beds (9 Day Case and 9 inpatient)

Children's Assessment Unit (CAU)
 15 Care Spaces,

Children's OPD – includes phlebotomy service (GP and OPD clinic bloods),

Gynaecology

Clinical Director for Gynae – Dr Claire Burton

Matron – Nicola Read

Specialty Governance lead (Nursing & Medical) – Veronica Sutton/Natalia Povolotskaya

B4 10 beds/ Gynae Assessment Area
 Ambulatory /EPAU currently relocated to Gynae Outpatients

Gynae Outpatients QA including Colposcopy and Hysteroscopy procedures

NICU

Clinical Director – Dr Charlotte Groves
Matron/Lead Nurse – Carol Moore
Governance Lead – Dr Chowdhury Olie & Carol Moore
 B9 NICU – 31 cots

Maternity Services

Clinical Director for Obstetrics - Dr Nime Vaithilingham

Deputy Director of Midwifery – Gergana Nikolova

Consultant Midwife – Julie Woodman
Governance Matron – Susanna Colwood 3/1/22

Community Matron – Gill Allen

Inpatient Matron - Gemma New

Antenatal Matron – Alison Scannell

Labour Ward Matron – Charlotte Burley

B5 – QA Birth Centre

B6 – antenatal Ward – 16 beds

B7 – Postnatal Ward – 36 beds

B8 – Labour Ward – 18 Labour Rooms

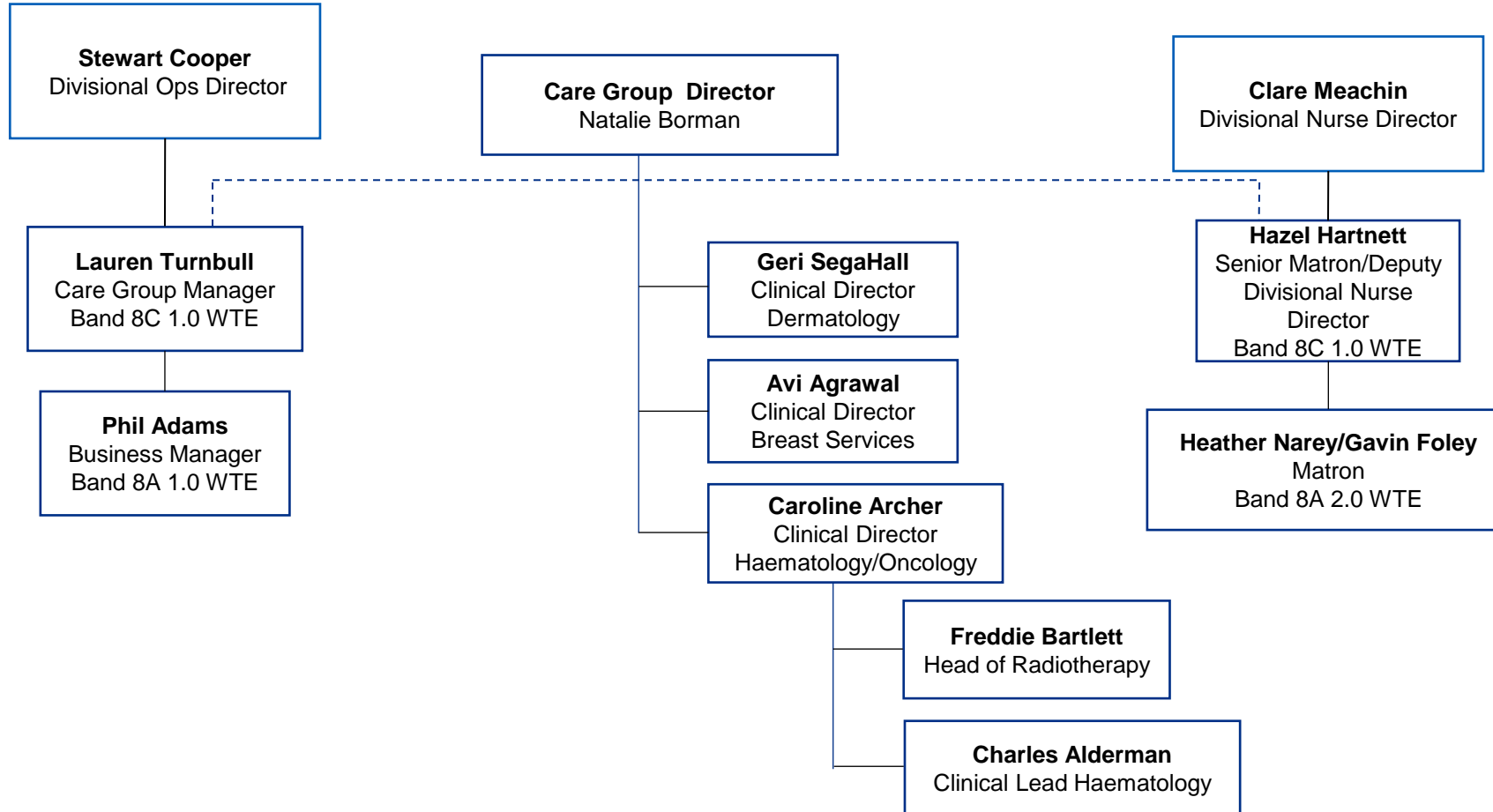
MAU – 5 bays

Scheduled Care 2 bays Jan 2022

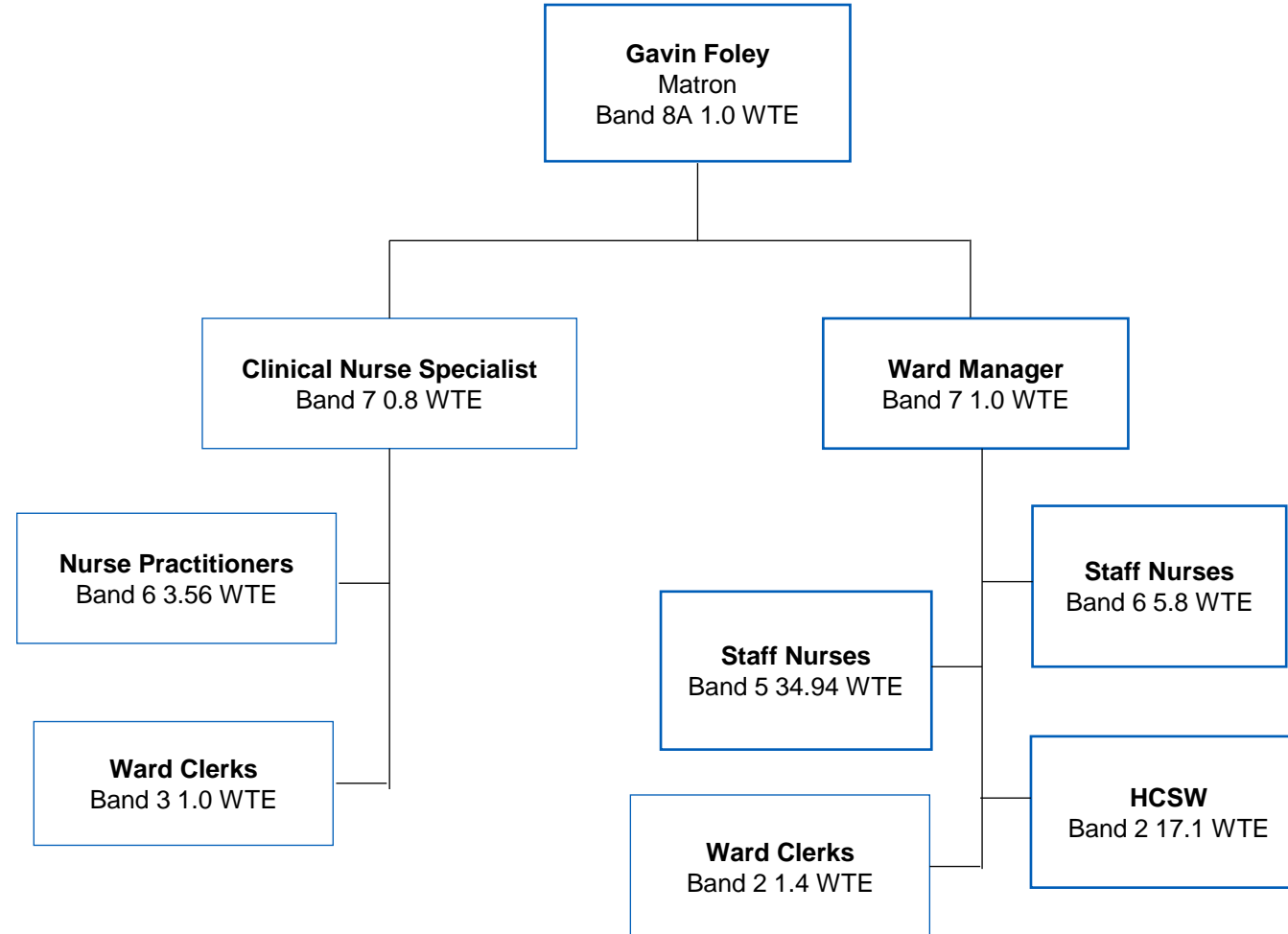
Maternity OPD - includes phlebotomy service /USS/ infusion services.

- Blake Maternity Centre
- The Grange Maternity Centre
- Portsmouth maternity Centre, Community midwifery, maternity assessment and maternity outpatients

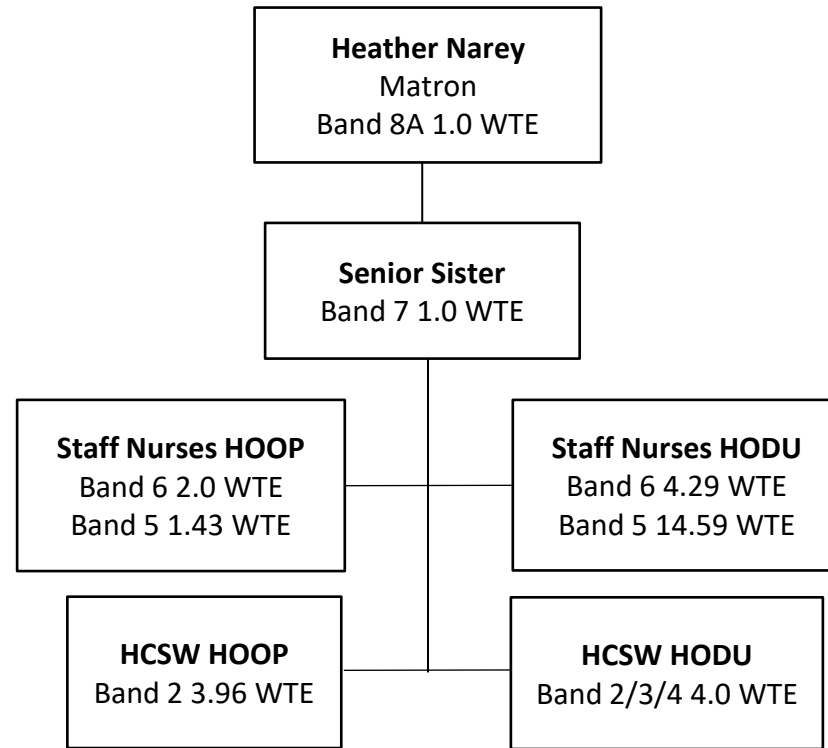
Regional Cancer Centre - Senior Management Team



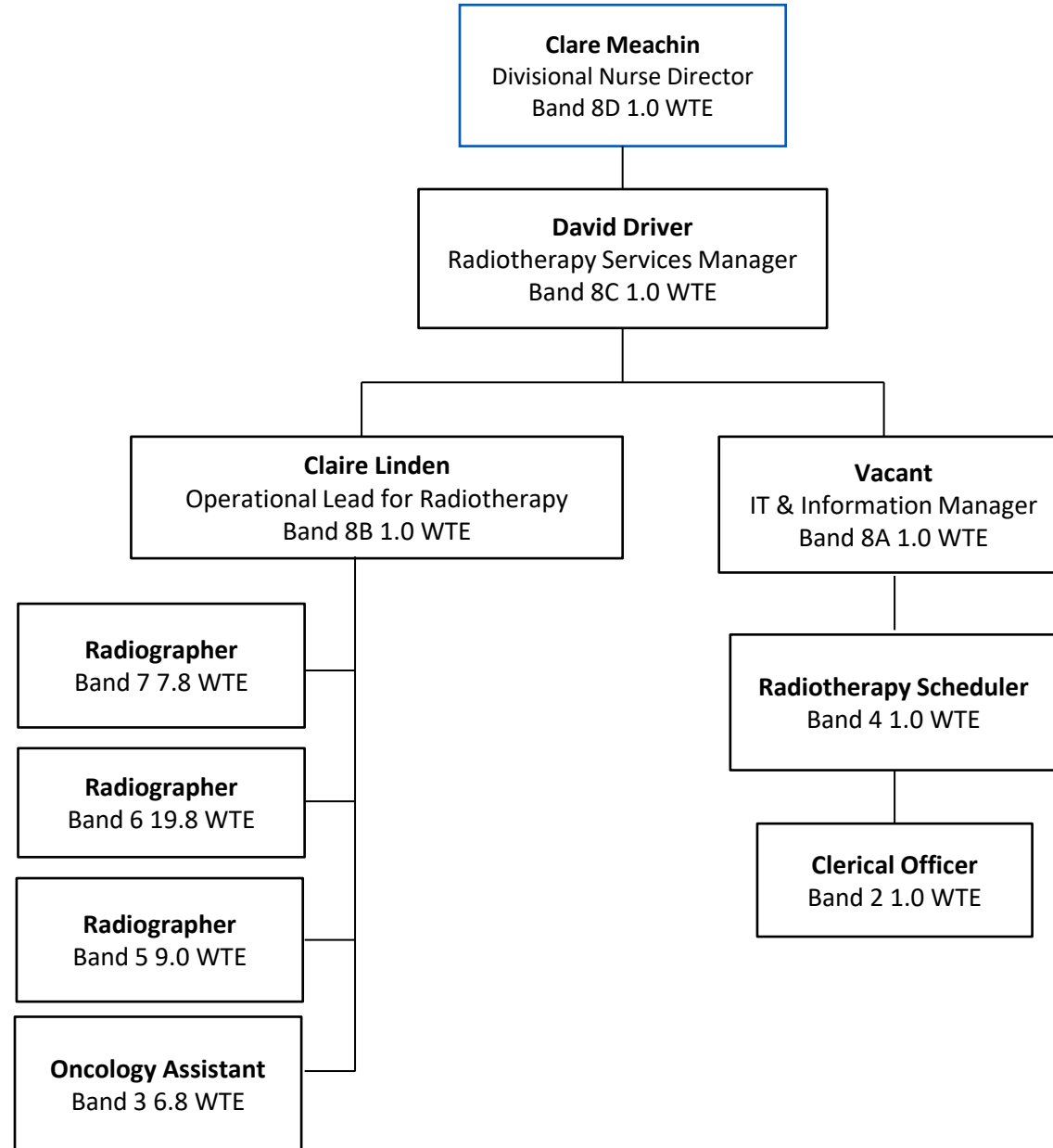
Regional Cancer Centre - Haematology and Oncology Ward F5/6/7 & AOS



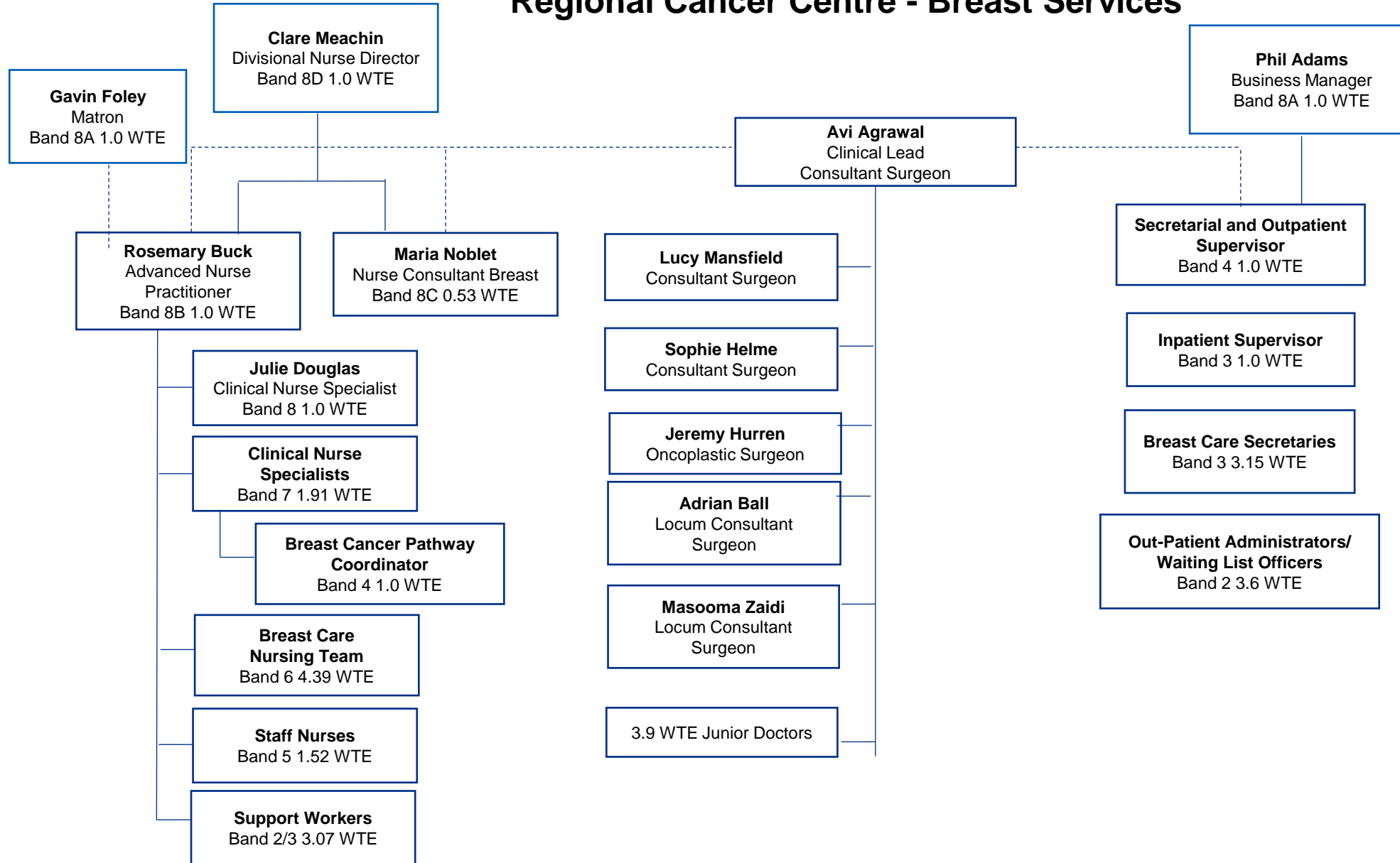
Regional Cancer Centre - Haematology and Oncology Day Unit (HODU) & Outpatients (HOOP)



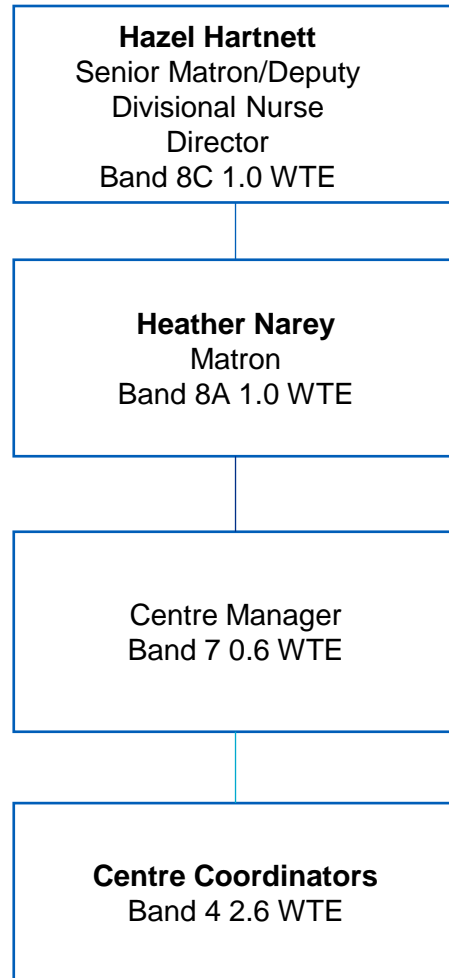
Regional Cancer Centre - Radiotherapy



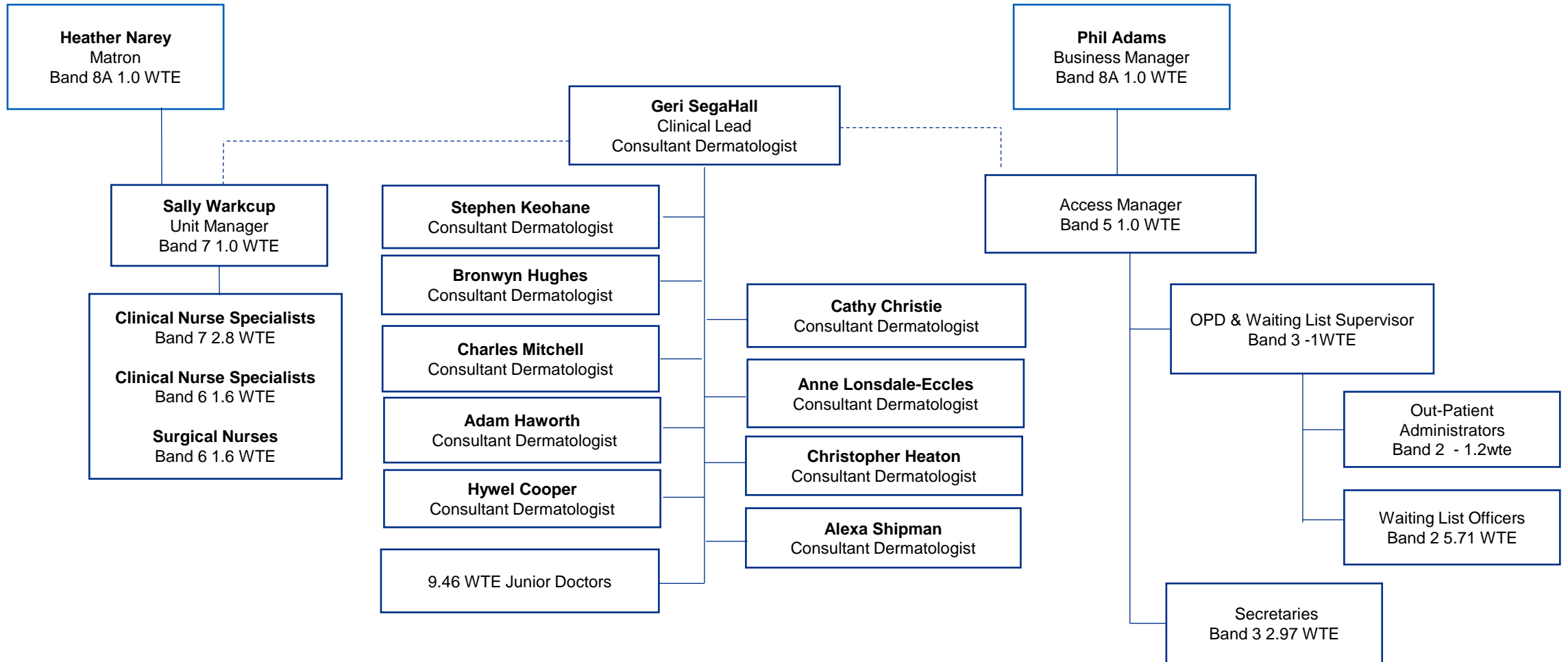
Regional Cancer Centre - Breast Services



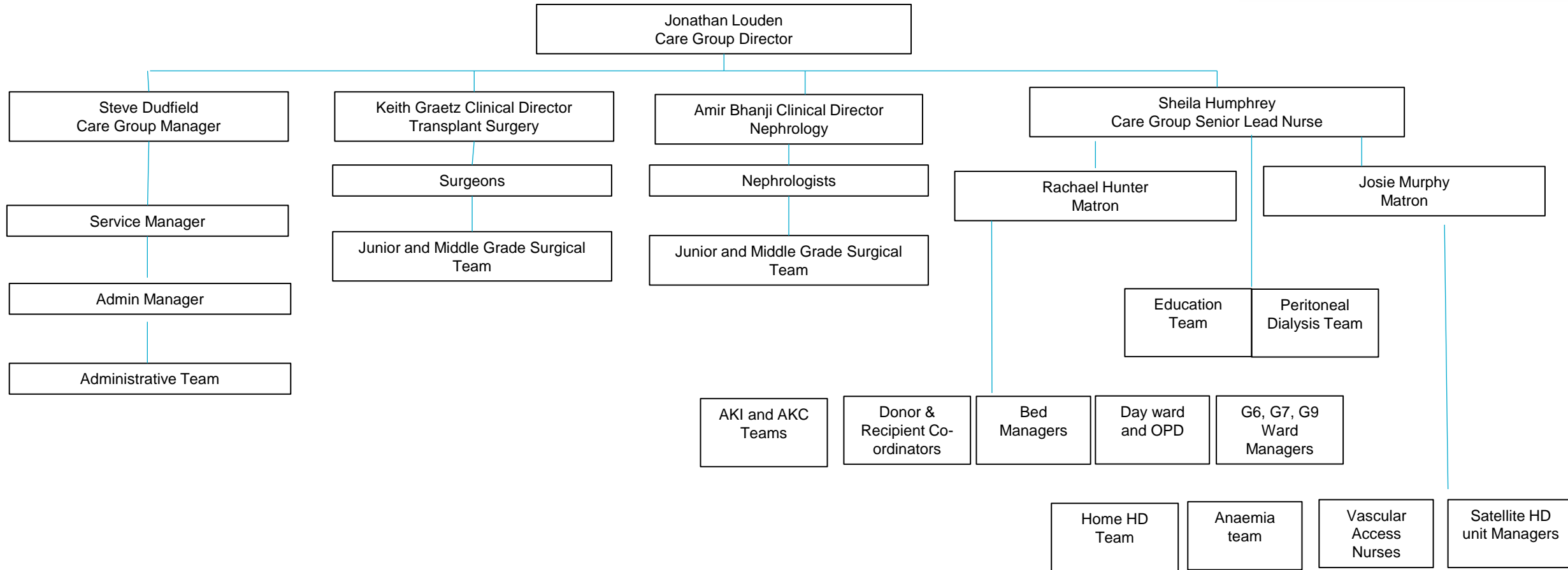
Regional Cancer Centre - Macmillan Centre



Regional Cancer Centre - Dermatology



Renal & Transplant Organisational Chart



Working together To drive excellence in care for
our patients and communities
