



Portsmouth Hospitals
NHS Trust

Networked Services

Organisational Chart

Working together To drive excellence in care for our patients and communities



Networked Services



Portsmouth Hospitals
NHS Trust

Executive Team

Divisional Nurse Director
Clare Meachin

Divisional Director
Constantinos Yiangou

Divisional Operations Director
Paul Bostock

HR Partner
Kate Jack

Finance Partner
Nicole Randell

Women & Children's
Care Group Director- Dr Charlotte Groves
Care Group Manager- Clare Handley
Director of Midwifery - Helen Bland

Renal and Transplantation
Care Group Director - Natalie Borman
Care Group Manager - Steve Dudfield
Senior Lead Nurse - Sheila Humphrey

Regional Cancer Centre
Care Group Director - Vacant
Care Group Manager - Lauren Turnbull
Senior Lead Nurse - Hazel Hartnett

Corporate Cancer Team
Trust Lead Cancer Clinician - Constantinos Yiangou
Head of Cancer Services - Vacant
Lead Cancer Nurse - Rebecca James

Midwifery
Obs & Gynae

Paediatric Unit
NICU and Gynae

Renal Med
Nephrology

Renal Transplant

Haem/
Oncology

Radiotherapy

Dermatology

Breast Care Centre

Clinical Director Obs – Dr Nimi Vaithilingham
Clinical Director Gynae – Dr Claire Burton
Clinical Director Paeds - Dr Jo Borbone
Clinical Director Neonates – Dr Charlotte Groves
Matrons – Carol Moore and Katrina Adams
Maternity Matrons – Rebecca Church – Community and Kerry Madgwick
Business Manager – Jayne Jempson

Clinical Director Nephrology - Jonathan Loudon
Clinical Director Transplant - Keith Graetz
Matrons – Jennifer Goulden and Josephine Murphy
Renal Service Manager – Jane Elmes

Head of Radiotherapy – Freddie Bartlett
Clinical Director Onc/Haem Caroline Archer
Clinical Director Dermatology - Geri Segahall
Clinical Lead Breast - Avi Agrawal
Clinical Lead Haematology - Charles Alderman
Matrons – Emma Lee/Heather Narey
Business Manager –Phil Adams

Women & Children's Care Group

Care Group Director – Dr Charlotte Groves
Care Group Manager – Clare Handley
Director of Midwifery – Helen Bland
Care Group Medical Governance Lead – Sophie Robertson
Business Manager – Jayne Jempson

Paediatric Unit

Clinical Director – Dr Joanne Borbone
Matron – Katrina Adams
Specialty Governance lead (Nursing & Medical) – Katrina Adams Judith Scanlan and Sophie Robertson

A7 Starfish (Medical Ward) 24 beds

A8 Shipwreck (Surgical and Day case) 18 beds (9 Day Case and 9 inpatient)

Children's Assessment Unit (CAU)
15 Care Spaces,

Children's OPD – includes phlebotomy service (GP and OPD clinic bloods),

Gynaecology

Clinical Director for Gynae – Dr Claire Burton

Matron – Katrina Adams

Specialty Governance lead (Nursing & Medical) – Veronica Sutton/Natalia Povolotskaya

B4 10 beds/ Gynae Assessment Area
Ambulatory /EPAU currently relocated to Gynae Outpatients

Gynae Outpatients QA including Colposcopy and Hysteroscopy procedures

NICU

Clinical Director – Dr Charlotte Groves
Matron/Lead Nurse – Carol Moore
Governance Lead – Chowdhury Olie & Carol Moore
 B9 NICU – 31 cots

Maternity Services

Clinical Director for Obstetrics - Dr Nimi Vaithilingham

Deputy Director of Midwifery – Wendy Marsh

Senior Midwifery manager, Clinical Effectiveness, Quality & Safety lead for Midwifery Practice Education & Risk Advisor for the Care Group– Sharon Hackett

Senior Midwifery Manager for Community Services – Rebecca Church

Senior Midwifery Manager for Acute Services - Kerry Madgwick

B5 – Mary Rose Ward

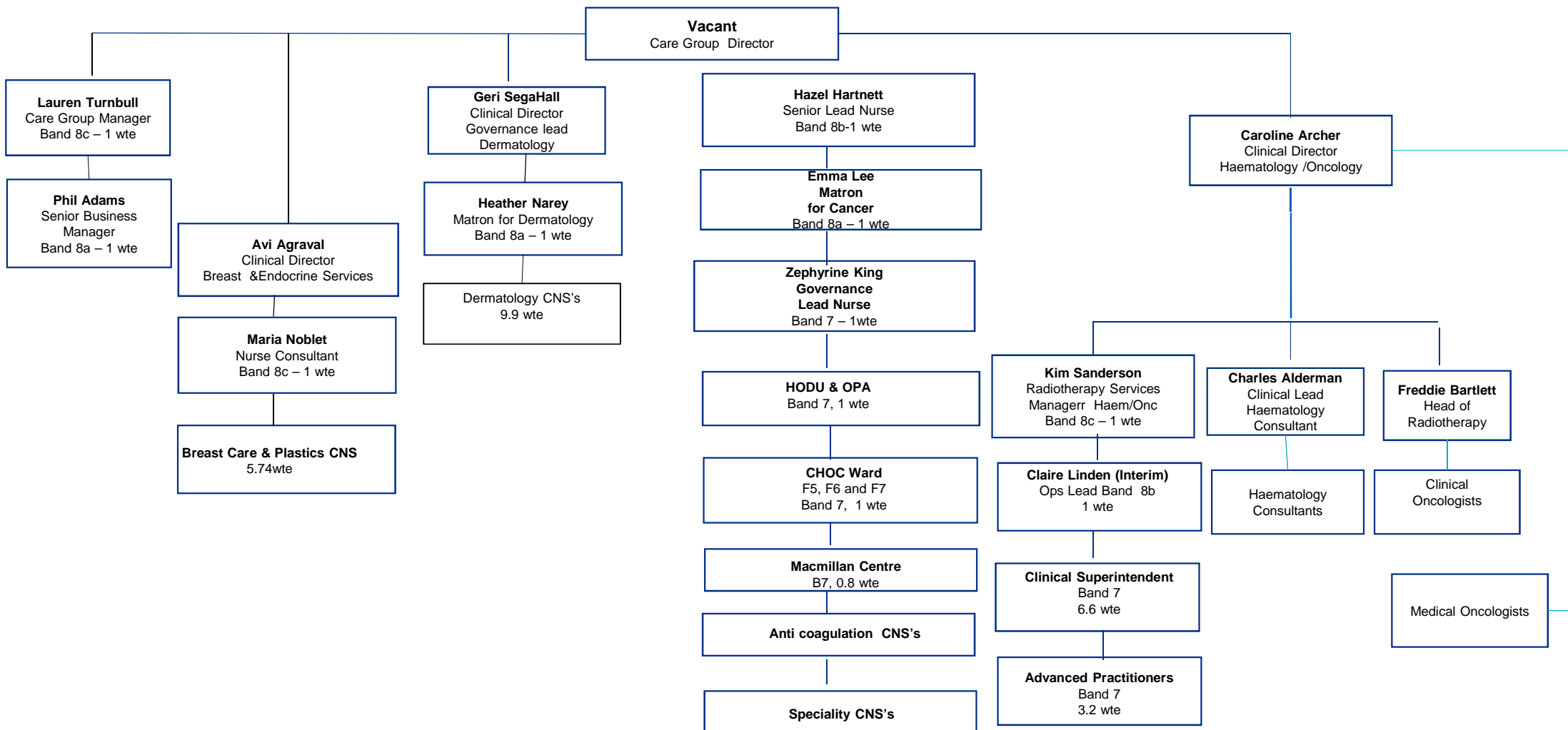
B6 – antenatal Ward – 16 beds

B7 – Postnatal Ward – 31 beds

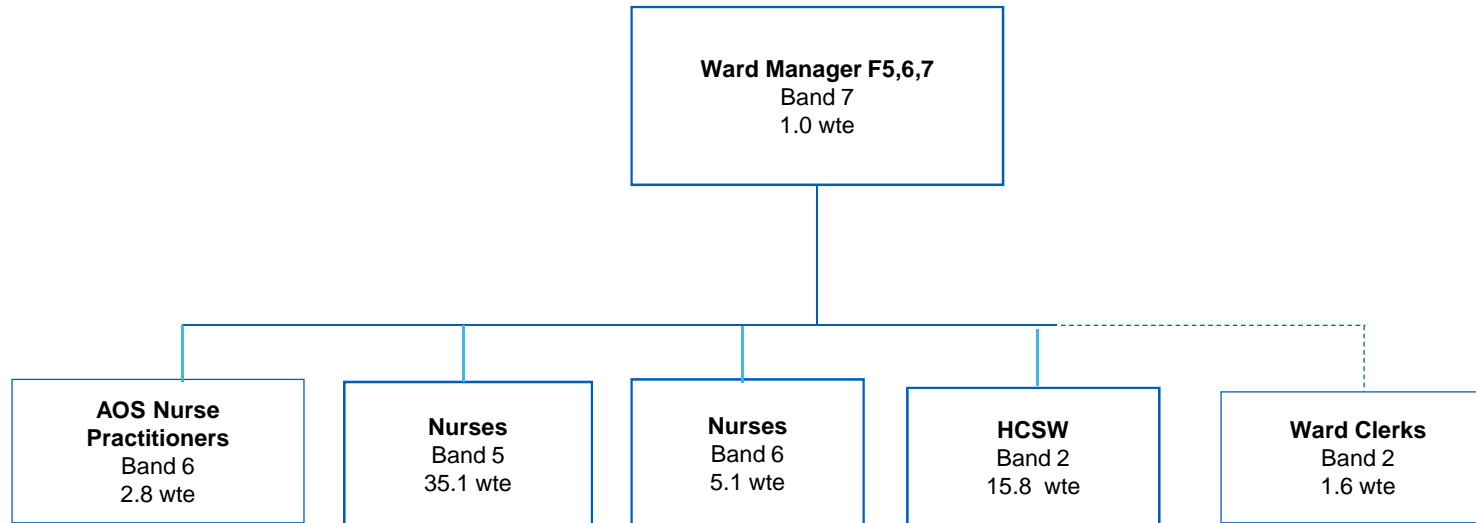
B8 – Labour Ward – 28 Care spaces

- Blake Maternity Centre
- The Grange Maternity Centre
- Portsmouth maternity Centre, Community midwifery, maternity assessment and maternity outpatients

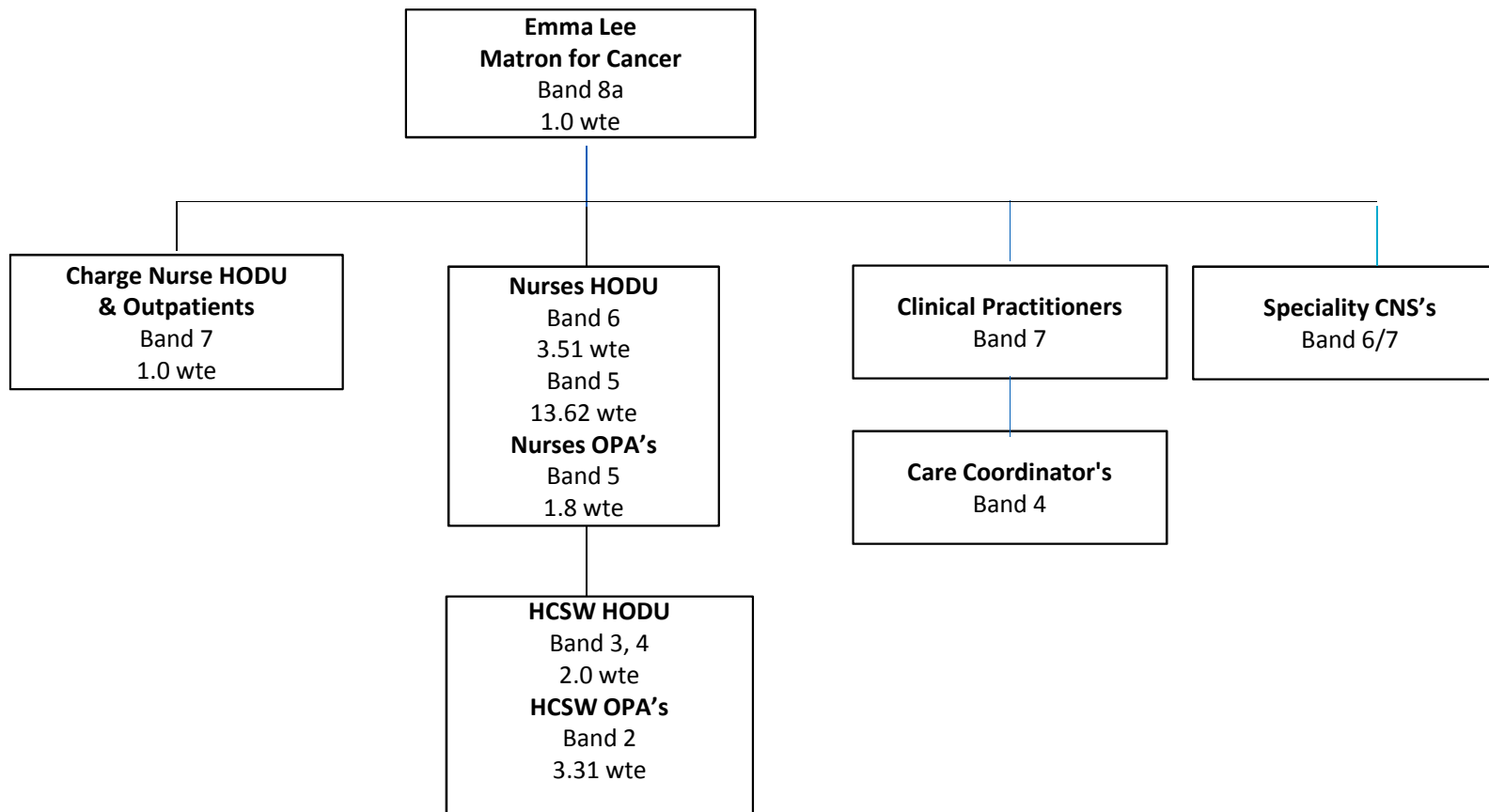
Regional Cancer Centre Care Group Senior Management Team



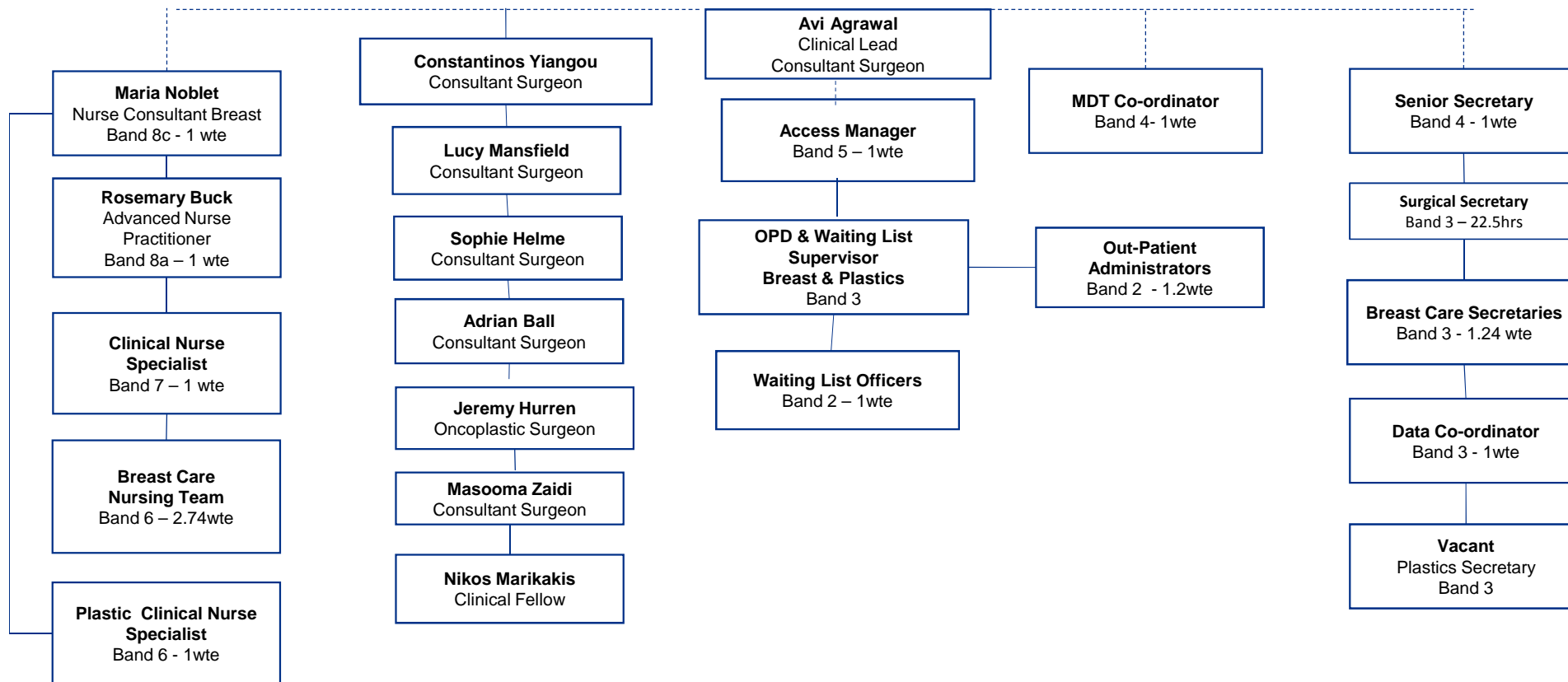
Regional Cancer Centre Care Group Haematology and Oncology Ward F5,6 &7



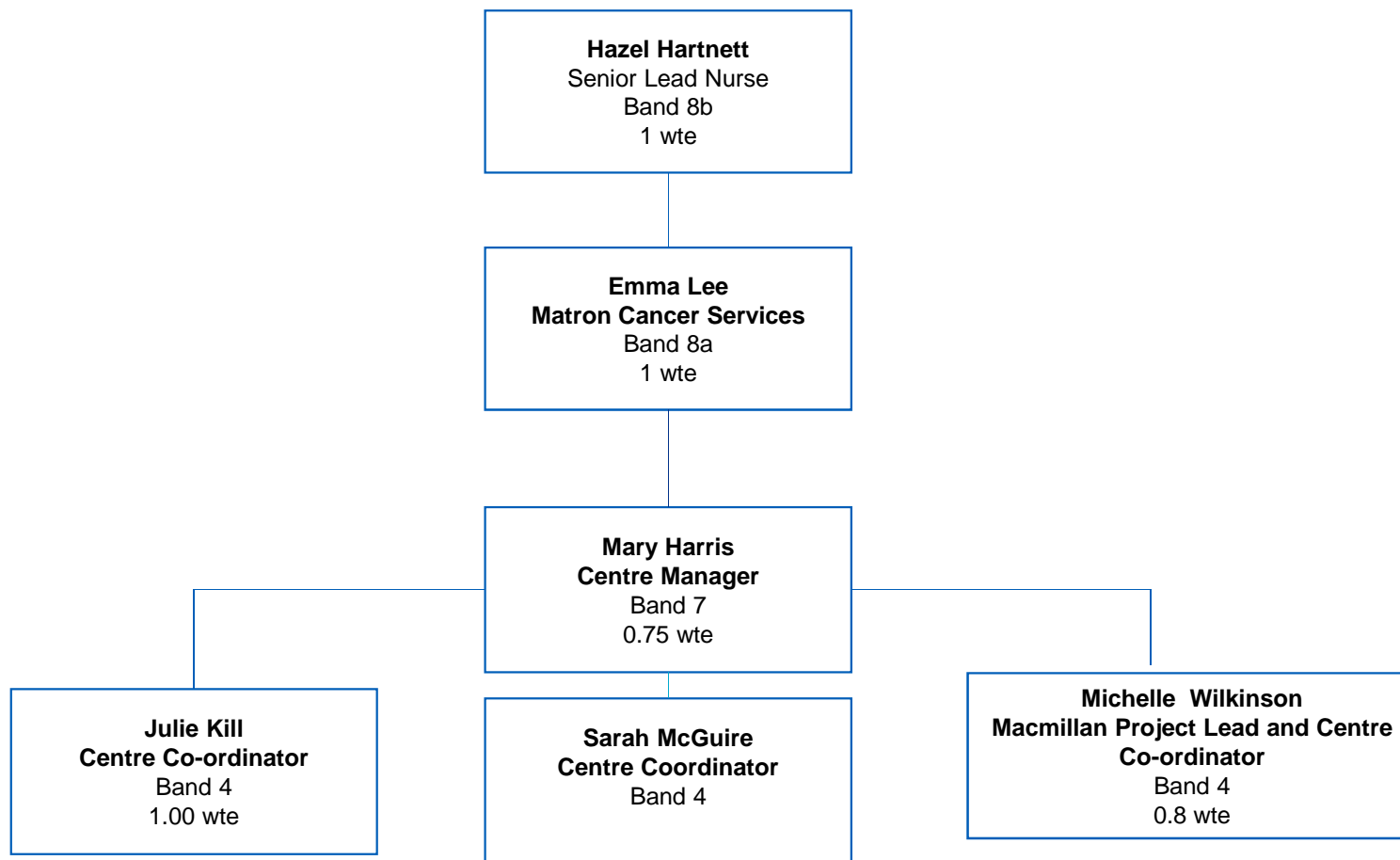
Regional Cancer Centre Care Group Haematology and Oncology Day Unit (HODU) & OPA



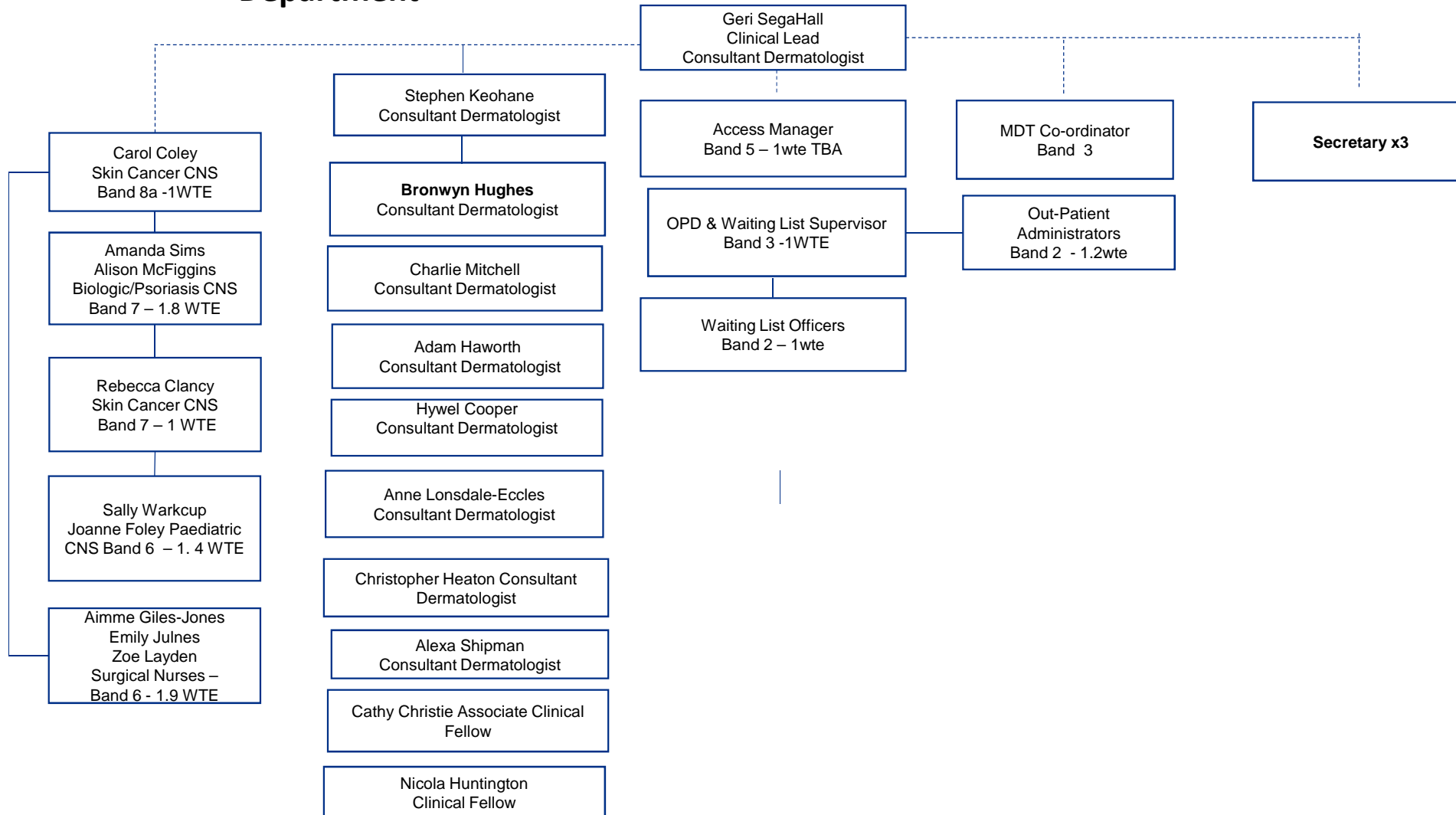
Regional Cancer Centre Breast Services



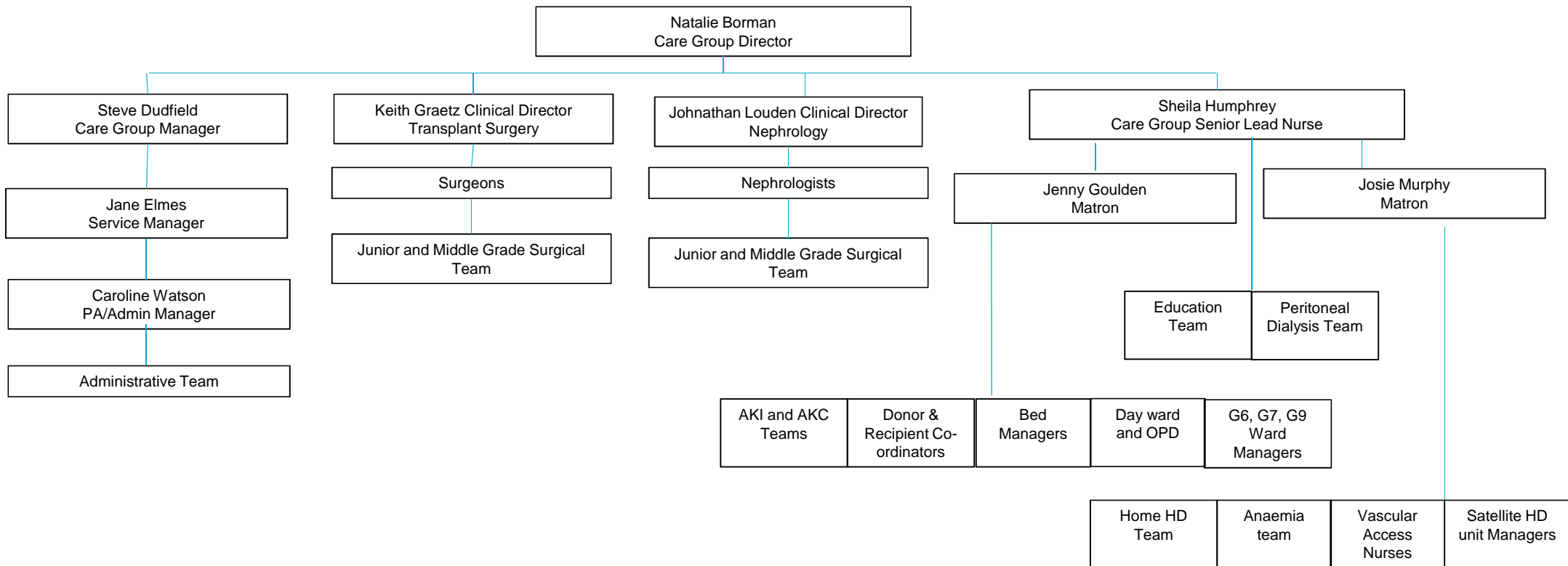
Regional Cancer Centre Macmillan Centre



Regional Cancer Centre Organisational Chart Dermatology Out Patient Department



Renal & Transplant Organisational Chart



Working together To drive excellence in care for our patients and communities

