

<p><b>Subject:</b></p>	<p><b>Board Performance Report, Quarter 2 – 2015/16 Research and Innovation</b></p>
<p><b>Prepared by:</b> <b>Sponsored by:</b></p>	<p><b>Dr Greta Westwood, Deputy Director of Research &amp; Innovation</b></p>
<p><b>Purpose of paper</b></p>	<p>To brief the Board on research performance by Clinical Service Centre against local and national bench marks.  <b>For Information only</b></p>
<p><b>Key points for Trust Board members</b>  <i>Briefly summarise in bullet point format the main points and key issues that the Trust Board members should focus on including conclusions and proposals</i></p>	<ul style="list-style-type: none"> <li>• Clinical Service Centre Senior Management Team and Research Leads have received month 6, 2015 report</li> <li>• Research recruitment is 104% of Q2 goal and 59% of annual goal.</li> <li>• Recruitment performance against our national peers - <b>8<sup>th</sup> most research active</b> large acute NHS organisation (n=42) – last month 6<sup>th</sup>. Ambition to be in top 20%.</li> <li>• Research income £2,026,599 at Q2 (2014/15 full year - £4,534,555)</li> <li>• Patients and staff recruited into research studies between October and September each year contributes to the funding allocation at the start of the following financial year. Funding is activity based &amp; weighted by the complexity of the study. Weighted recruitment at <b>Month 12</b> of current activity based period is 10,195 more than in the whole of the previous year.</li> <li>• PHT is research active in 22 of 24 the nationally described specialities – last quarter 20</li> <li>• PHT is ranked in the <b>top 3 nationally</b> for recruitment in the following specialities: haematology, gastroenterology, hepatology, respiratory, critical care &amp; ageing</li> <li>• PHT is ranked in the <b>top 10 nationally</b> for recruitment in the additional following specialities: ophthalmology, dermatology, children, health services research &amp; MSK</li> <li>• PHT accountable for not achieving a 70-day national target (research approval pack received to first patient recruited) in 7% of all clinical trials (2014/15 13%)</li> <li>• 77% of all commercial studies have achieved expected recruitment goal within agreed timelines (80% Q1, 85% 204/15)</li> <li>• Research approvals 100% compliant (15 days)</li> <li>• Only 31% (35% Q1) of consultant workforce research trained since last quarter</li> <li>• Not able to report innovation activity until new software implemented (now expected Q3)</li> </ul>

<b>Options and decisions required</b> <i>Clearly identify options that are to be considered and any decisions required</i>	For information
<b>Next steps / future actions:</b> <i>Clearly identify what will follow the Trust Board's discussion</i>	<ul style="list-style-type: none"> <li>To begin to report innovation activity in Quarter 3 2015/16 – slipped date</li> <li>Greater scrutiny on 70 day target for commercial studies</li> </ul>
<b>Consideration of legal issues (including Equality Impact Assessment)?</b>	N/A
<b>Consideration of Public and Patient Involvement and Communications Implications?</b>	N/A

<b>Links to Portsmouth Hospitals NHS Trust Board Strategic Aims, Assurance Framework/Corporate Risk Register</b>	
<b>Strategic Aim</b>	<b>Strategic Aim 2: Develop a reputation for excellence in innovation, research and development and education in the top 20% of our peers</b>
<b>BAF/Corporate Risk Register Reference (if applicable)</b>	
<b>Risk Description</b>	
<b>CQC Reference</b>	

<b>Committees/Meetings at which paper has been approved:</b>	<b>Date</b>



Improving Lives  
Through Excellence

# Research & Innovation Performance Board Report

## Quarter 2

## April 2015 – September 2015

Data obtained: 3<sup>rd</sup> November 2015

NB: please note this is not a real time report so allow the six week data upload time when reviewing this report

Report produced by:

Graham Halls, Research Facilitator

[graham.halls@porthosp.nhs.uk](mailto:graham.halls@porthosp.nhs.uk)

Jazmin Stubbings, Research Administrator

[Jazmin.Stubbings@porthosp.nhs.uk](mailto:Jazmin.Stubbings@porthosp.nhs.uk)

On Behalf of :

[research.office@porthosp.nhs.uk](mailto:research.office@porthosp.nhs.uk)

**Research & Innovation**

Portsmouth Hospitals NHS Trust

1st Floor Gloucester House

Queen Alexandra Hospital

Southwick Hill Road

Cosham

Portsmouth

Hampshire

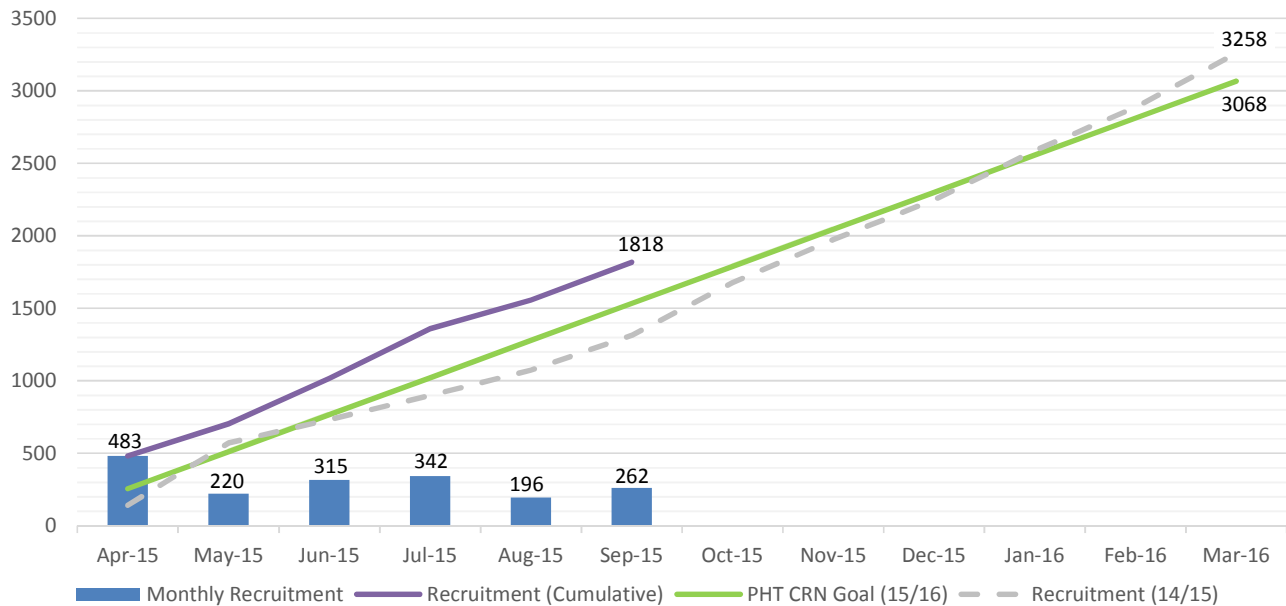
PO6 3LY

Email: [research.office@porthosp.nhs.uk](mailto:research.office@porthosp.nhs.uk)

Tel: 023 9228 6236

## SECTION 1: RESEARCH RECRUITMENT

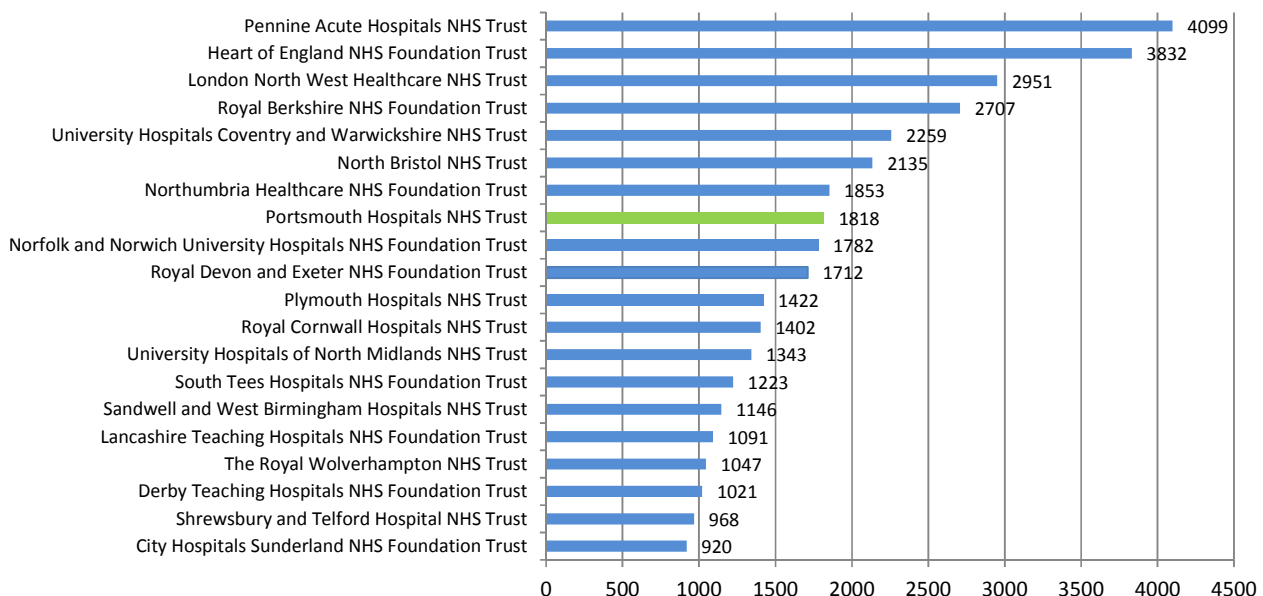
**CHART 1.1 PHT PORTFOLIO (NON-COMMERCIAL/COMMERCIAL) MONTHLY AND CUMULATIVE RECRUITMENT SET AGAINST WESSEX CLINICAL RESEARCH NETWORK (CRN) GOAL**



Source: NIHR Open Data Platform.

Chart 1.1 shows all PHT monthly and cumulative Portfolio recruitment for April-September 2015 against the recruitment goal set by the Clinical Research Network (CRN) Wessex and recruitment in 2014/15. Portfolio recruitment includes all patients and staff recruited into high quality research studies as defined by the National Institute of Health Research (NIHR) and adopted onto the NIHR Portfolio. This chart does not include recruitment into other studies i.e student studies etc (non-portfolio). Chart 1.2 shows the ranking of the first 20 large acute NHS organisations (total n=42). PHT is 8th (19%), Q1 4th; the aim is to remain in the top 20% among our peers.

**CHART 1.2 PHT POSITION IN ENGLAND BY 2015/2016 RECRUITMENT (LARGE ACUTE TRUSTS ONLY)**



Source: NIHR Open Data Platform

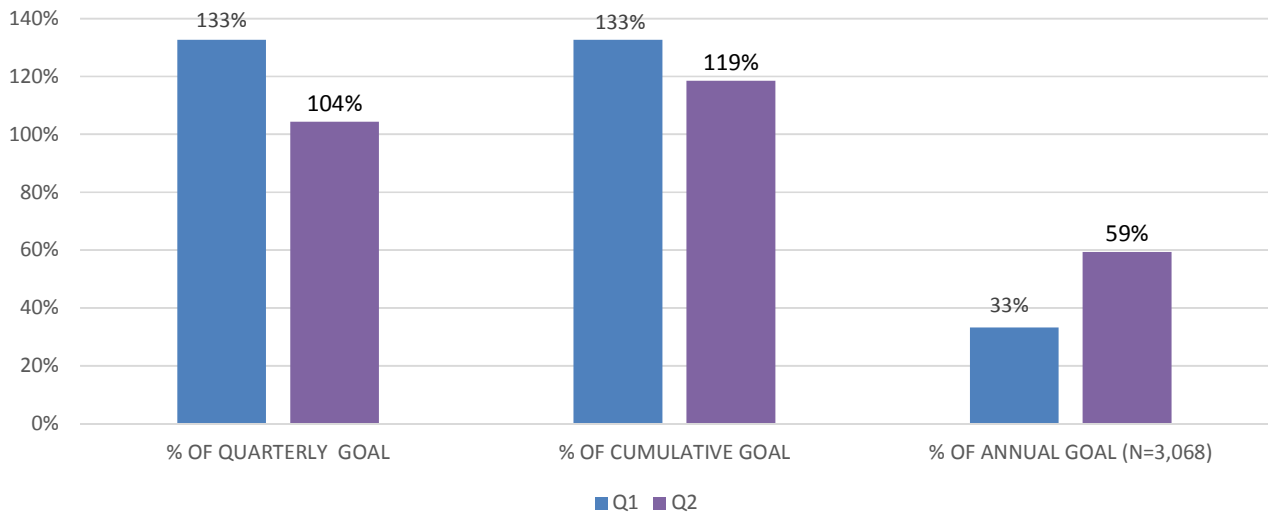
**Table 1.1 & Chart 1.3 PHT PORTFOLIO RECRUITMENT AGAINST QUARTERLY AND ANNUAL GOALS**

**TABLE 1.1**

QUARTER 15/16	RECRUITMENT	CUMULATIVE RECRUITMENT	CUMULATIVE GOAL	% OF QUARTERLY GOAL	% OF CUMULATIVE GOAL	% OF ANNUAL GOAL (N=3,068)
Q1	1018	1018	767	133%	133%	33%
Q2	800	1818	1534	104%	119%	59%
Q3	-	-	-	-	-	-
Q4	-	-	-	-	-	-

Source: NIHR Open Data Platform

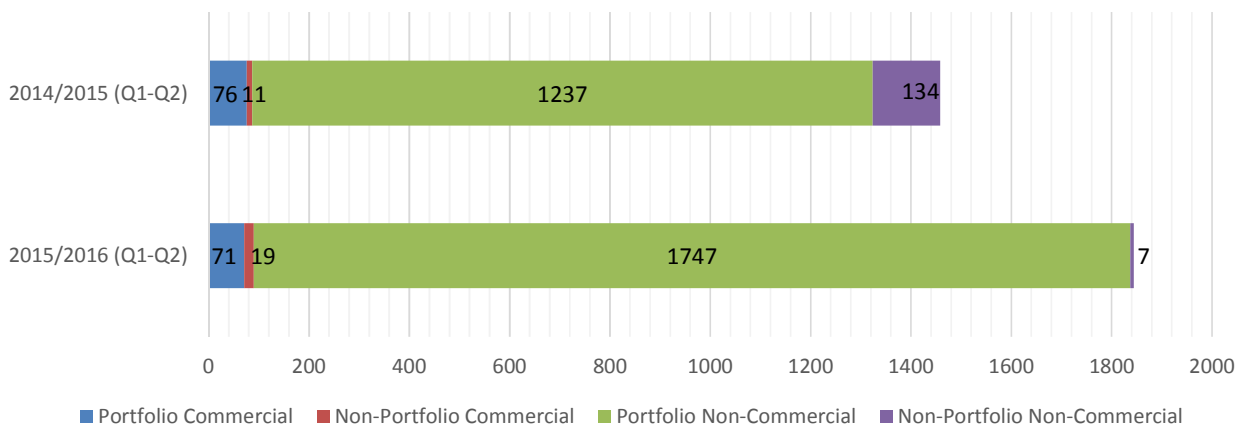
**Chart 1.3**



Source: NIHR Open Data Platform

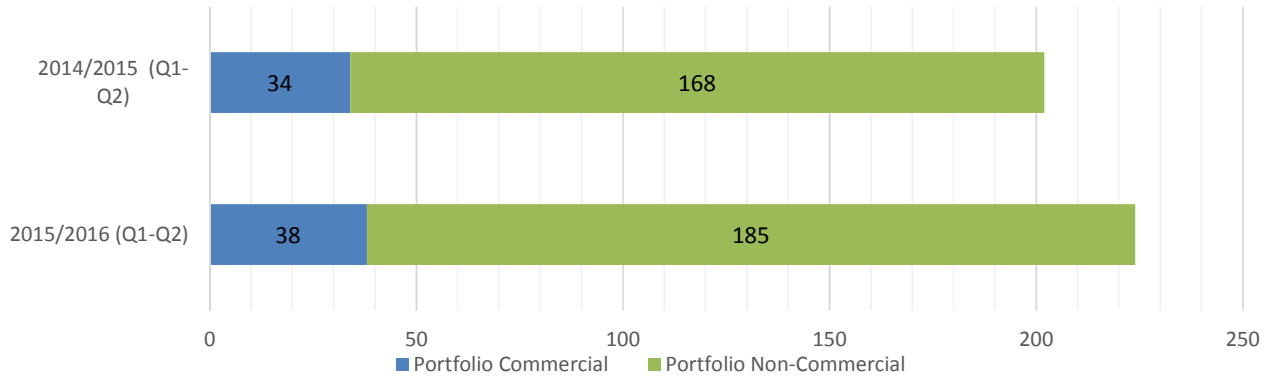
All research recruitment (portfolio and non-portfolio) by commercial/non-commercial research up to Q2 (September) 2015/16 and in the same period in 2014/15 is shown in Chart 1.4. The numbers of portfolio studies by funding type (commercial/non-commercial) are shown in Chart 1.5.

**CHART 1.4 ALL COMMERCIAL AND NON-COMMERCIAL RECRUITMENT (PORTFOLIO AND NON-PORTFOLIO)**



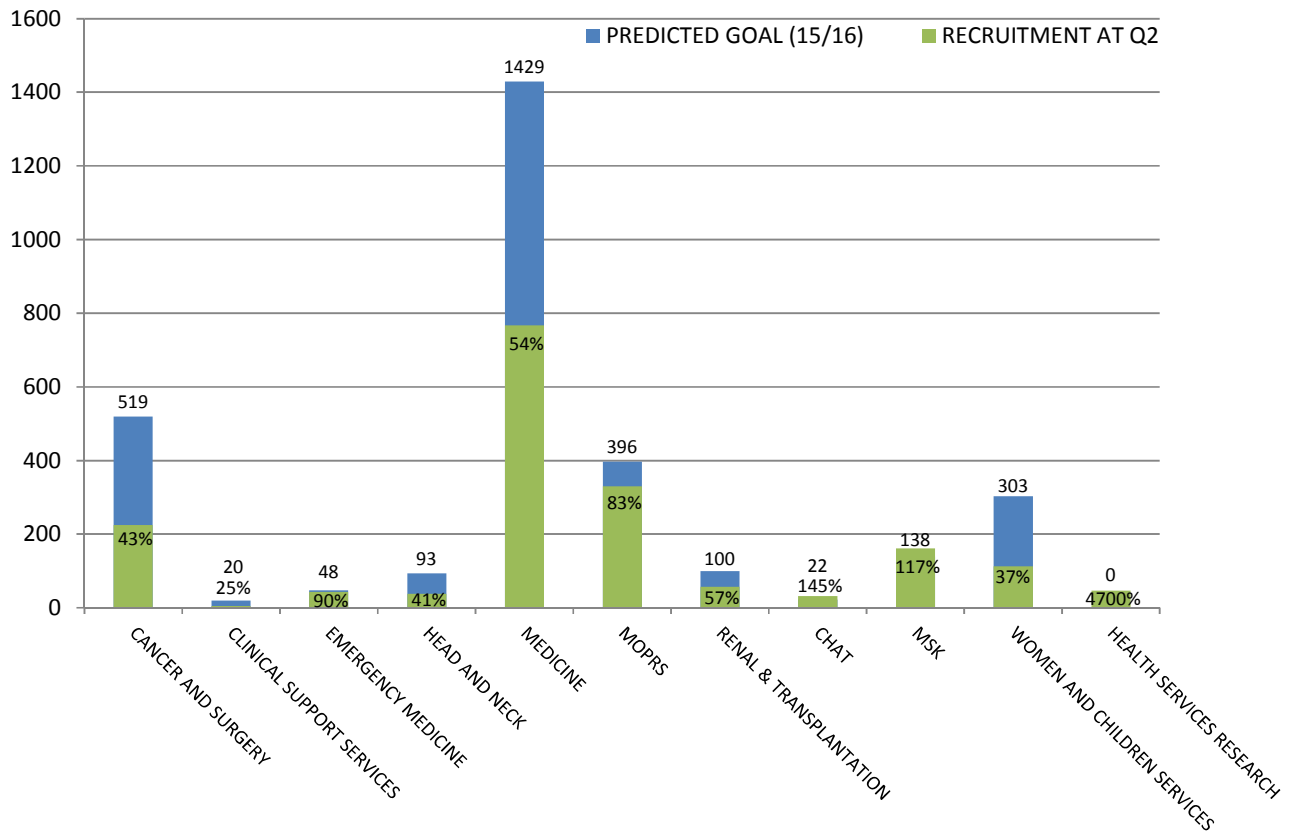
Source: NIHR Open Data Platform (Portfolio data), Edge™ Research Management System (Non-Portfolio data)

**CHART 1.5 NUMBER OF STUDIES BY FUNDING TYPE**



Source: Edge Research Management System

**CHART 1.6 Q2 RESEARCH RECRUITMENT BY ALL CLINICAL SERVICE CENTRES AGAINST ANNUAL RECRUITMENT GOALS**



Source: NIHR Open Data Platform.

**TABLE 1.2 SUMMARY OF RESEARCH RECRUITMENT BY CSC & SPECIALITY SET AGAINST MONTHLY & ANNUAL RECRUITMENT GOAL**

Speciality	Recruitment	Goal	% of Goal	Goal	% of Goal	% of Total	% of Total	Number of	Non-	Non-	Number of	Commercial
	(September 2015)	(September 2015)	(September 2015)	(2015/16)	(2015/16)	Recruitment by Speciality (September 2015)	Recruitment by CSC (September 2015)	Non-Commercial Studies	Commercial Recruitment	Commercial Studies	Commercial Recruitment	
Cancer and Surgery	Cancer	150	228	66%	456	33%	8%	51	142	6	8	
	Haematology	55	31	177%	62	89%	3%	7	55	-	-	
	Surgery	20	1	4000%	1	2000%	1%	5	20	-	-	
Clinical Support Services	Infectious diseases and microbiology	5	10	50%	20	25%	0%	5	5	-	-	
Emergency Medicine	Injuries and emergencies	43	24	179%	48	90%	2%	7	43	-	-	
Head and Neck	Ophthalmology	36	47	77%	93	39%	2%	3	23	3	13	
	Ear, nose and throat	2	0	-	0	-	0%	2	0	1	2	
	Oral and dental health	-	0	-	0	-	-	-	-	-	-	
Medicine	Cardiovascular disease	43	61	70%	122	35%	2%	6	36	6	7	
	Dermatology	52	50	104%	100	52%	3%	4	52	2	0	
	Diabetes	51	161	32%	321	16%	3%	5	51	-	-	
	Gastroenterology	266	265	100%	530	50%	15%	5	266	3	0	
	Hepatology	43	24	179%	48	90%	2%	6	33	4	10	
	Respiratory disorders	312	154	203%	308	101%	17%	10	281	7	31	
MOPRS	Ageing	306	150	204%	300	102%	17%	3	306	-	-	
	Dementias and neurodegeneration	9	24	38%	47	19%	0%	5	9	-	-	
	Stroke	15	25	61%	49	31%	1%	6	15	-	-	
Renal and Transplantation	Renal disorders	57	50	114%	100	57%	3%	9	57	3	0	
CHAT	Anaesthesia, perioperative medicine and pain management	-	0	-	0	-	-	2	-	-	-	
	Critical care	32	11	291%	22	145%	2%	8	32	-	-	
MSK	Musculoskeletal disorders	161	69	233%	138	117%	9%	12	161	2	0	
Women and Children	Children	74	126	59%	251	29%	4%	17	74	-	-	
Services	Reproductive health and childbirth	39	26	150%	52	75%	2%	4	39	1	0	
Health Services Research	Health services and delivery research	47	0	-	0	-	3%	3	47	-	-	
	<b>Total</b>	<b>1,818</b>	<b>1534</b>	<b>-</b>	<b>3,068</b>	<b>-</b>	<b>100%</b>	<b>100%</b>	<b>185</b>	<b>1,747</b>	<b>38</b>	<b>71</b>
	% of Goal (September 2015)	119%										
	% of 2015/16 Goal	59%										
	Number of Non-Commercial Studies	185										
	Number of Commercial Studies	38										

Source: NIHR Open Data Platform, Edge™ Research Management System



**TABLE 1.3 RESEARCH RECRUITMENT BY CSC & SPECIALITY - PHT RANKED AGAINST ALL LARGE ACUTE TRUSTS (n=42) IN ENGLAND**

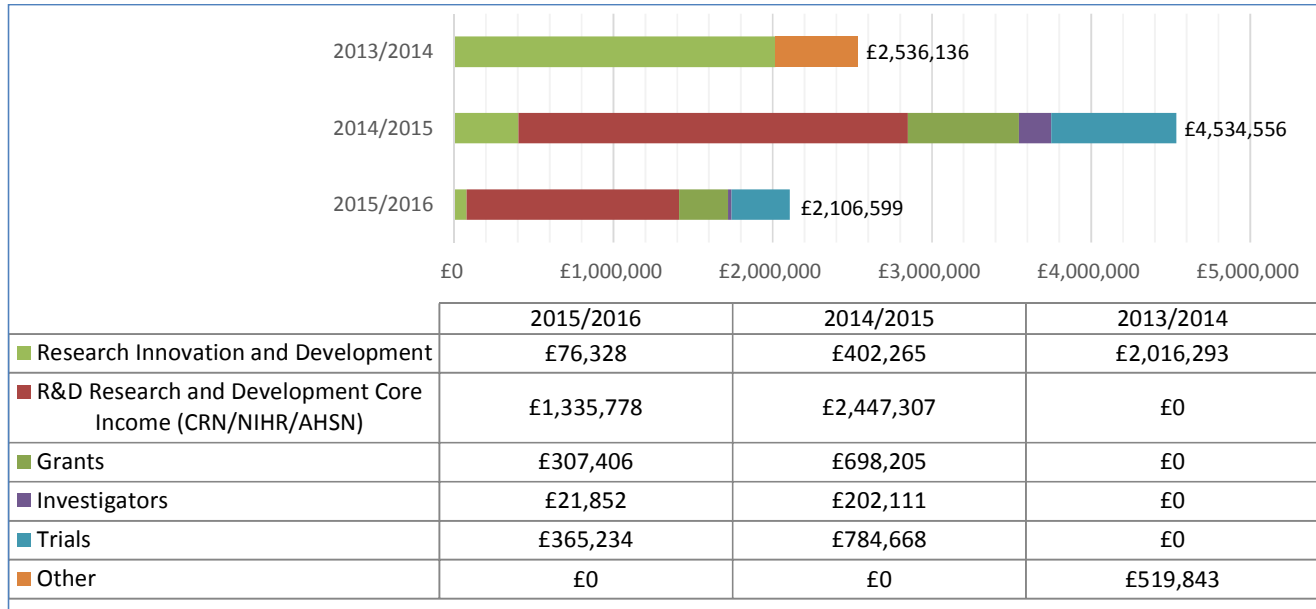
CSC	Speciality	Ranked Position in September 2015	Ranked Position in August 2015	Change (August - September)
Cancer and Surgery	Cancer	14	14	0
	Haematology	1	1	0
	Surgery	14	15	1
Clinical Support Services	Infectious diseases and microbiology	21	21	0
Emergency Medicine	Injuries and emergencies	10	8	-2
Head and Neck	Ophthalmology	4	5	1
	Ear, nose and throat	14	14	0
	Oral and dental health	-	-	-
Medicine	Cardiovascular disease	19	19	0
	Dermatology	5	6	1
	Diabetes	15	12	-3
	Gastroenterology	3	2	-1
	Hepatology	2	2	0
	Respiratory disorders	2	2	0
MOPRS	Ageing	1	1	0
	Dementias and neurodegeneration	15	14	-1
	Stroke	26	29	3
Renal and Transplant	Renal disorders	12	11	-1
CHAT	Anaesthesia, perioperative medicine and pain management	-	-	-
	Critical care	3	3	0
MSK	Musculoskeletal disorders	4	5	1
Women and Children's Services	Children	7	7	0
	Reproductive health and childbirth	26	24	-2
Health Services Research	Health services and delivery research	5	5	0

Source: NIHR Open Data Platform

## SECTION 2: FINANCE

The majority of PHT Research and Innovation (R&I) income is from the CRN Wessex and is shown in Chart 2.1. It is assumed the 'other' category in 2013/14 was commercial and trial income as we were unable to report by category in 2013.

**Chart 2.1 RESEARCH AND INNOVATION INCOME (2013/14 to Q2 2015/16)**

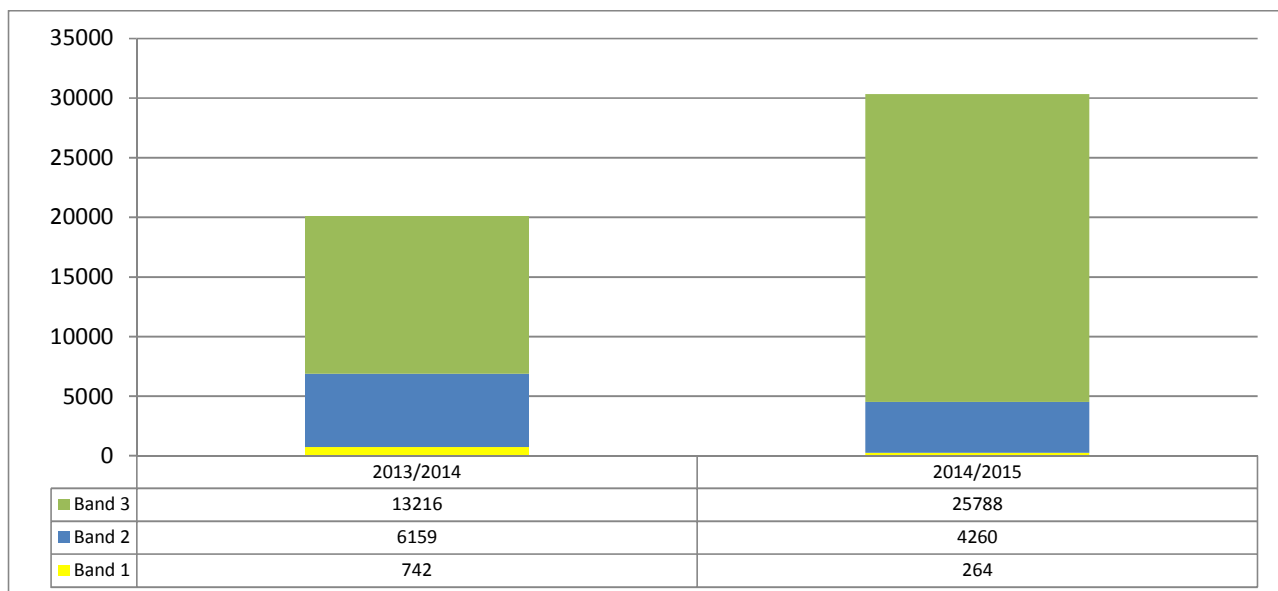


Source: PHT Finance Department

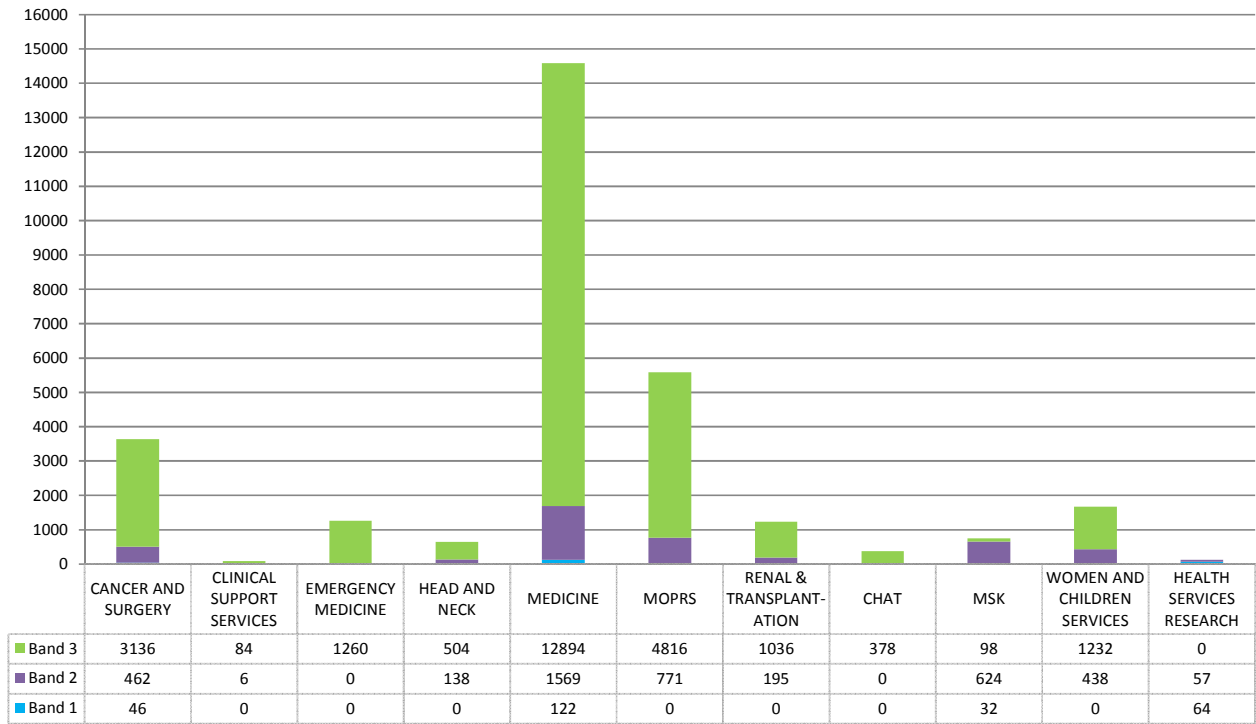
NiHR Clinical Research Network (CRN) funding is activity based and all recruitment between October and September each year contributes to the funding allocation at the start of the following financial year. Recruitment is weighted depending upon the complexity of the study and banded 1-3 accordingly, shown in Chart 2.3 by CSC.

- Band 1 are observational studies recruiting >10,000 participants
- Band 2 are other observational studies recruiting <10,000 participants
- Band 3 studies are interventional studies recruiting <10,000 participants

**CHART 2.2 PHT WEIGHTED RECRUITMENT BY (ABF) PERIOD: OCT – SEPT**



**CHART 2.3**      **WEIGHTED RECRUITMENT BY CSC IN ACTIVITY BASED FUNDING (ABF) PERIOD: OCT 2014 – SEP 2015**



Source: NIHR Open Data Platform.

## SECTION 3: RESEARCH TRAINED MEDICAL CONSULTANT STAFF BY CSC

All staff must be GCP (Good Clinical Practice) trained as a minimum to recruit patients to research studies. Table 3.1 shows the percentage of medical consultant staff who are GCP trained by CSC and those whose training is out of date. In total only 31% (35% in Quarter 4, 2014/15) of this staff group are GCP trained and therefore “research ready”. The aim is to increase this in 2015/16, our goal 75%.

**TABLE 3.1 RESEARCH TRAINED MEDICAL CONSULTANT STAFF BY CSC**

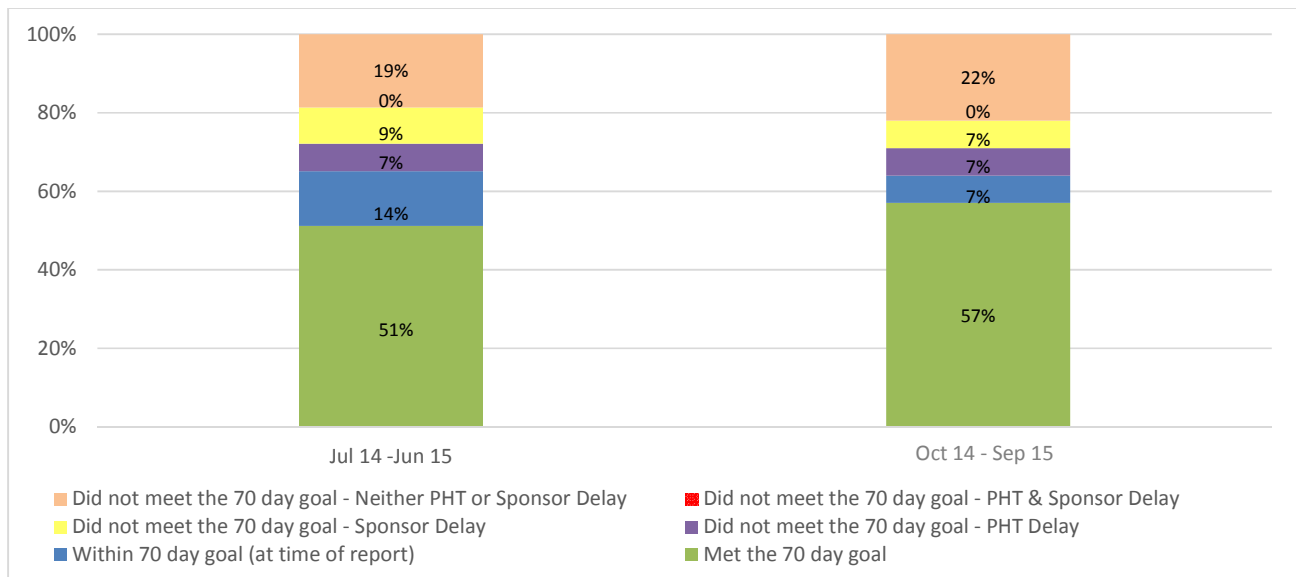
	September	October
<b>CHAT CSC</b>		
No	72%	72%
Out of date	9%	9%
Yes	19%	19%
<b>Clinical Support CSC</b>		
No	69%	69%
Out of date	2%	2%
Yes	29%	29%
<b>Emergency Medicine CSC</b>		
No	80%	80%
Out of date	0%	0%
Yes	20%	20%
<b>Head and Neck CSC</b>		
No	70%	67%
Out of date	3%	9%
Yes	27%	24%
<b>Medicine CSC</b>		
No	60%	35%
Out of date	10%	22%
Yes	30%	43%
<b>MOPRS CSC</b>		
No	61%	61%
Out of date	13%	13%
Yes	26%	26%
<b>MSK CSC</b>		
No	69%	69%
Out of date	0%	3%
Yes	31%	28%
<b>Renal CSC</b>		
No	20%	12%
Out of date	0%	41%
Yes	80%	47%
<b>Surgery and Cancer CSC</b>		
No	35%	35%
Out of date	19%	27%
Yes	46%	38%
<b>Women and Children CSC</b>		
No	41%	40%
Out of date	18%	20%
Yes	41%	40%

Source: PHT Human Resources data (07/07/15), R&I Researcher Database (04/11/15)

## SECTION 4: PERFORMANCE IN INITIATING & DELIVERING (PID) CLINICAL RESEARCH

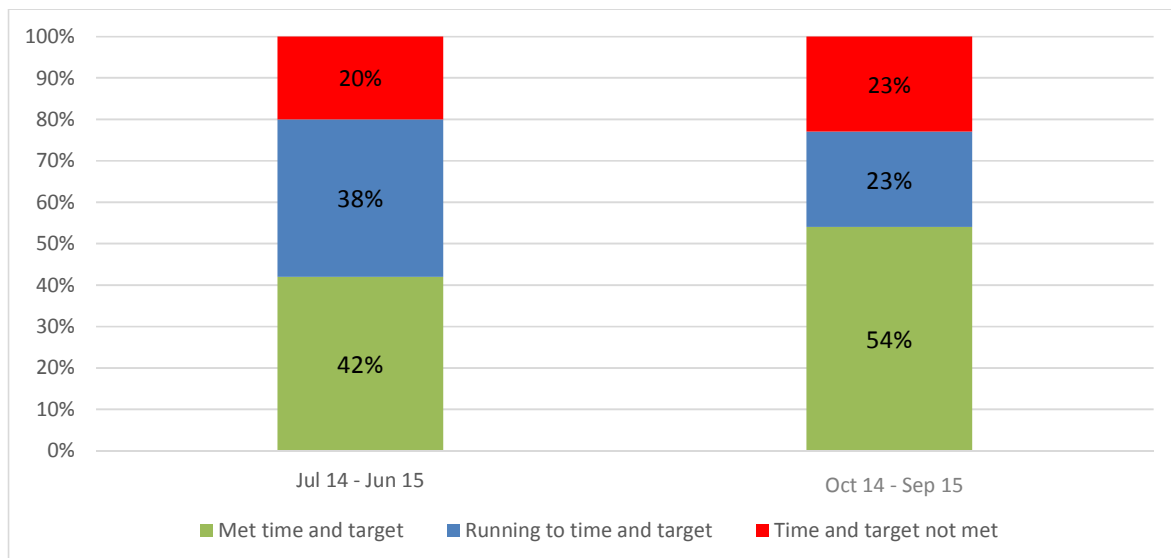
The Department of Health, via the National Institute for Health Research (NIHR) contracts, requires the quarterly publication of the 70-day benchmark for clinical trial initiation (Chart 4.1) and the recruitment to time and target for commercial contract clinical trials\*(Chart 4.2). These reports must be published on the public NHS organisation website. The 70-day performance measures the date the NHS organisation receives a valid research application to the time the first patient is recruited into that study. If a benchmark has not been achieved the reason for not doing so must be published. Research funding will be conditional on meeting the national benchmarks and performance will now affect funding (TBC).

**CHART 4.1 PERFORMANCE IN INITIATING CLINICAL RESEARCH**



Source: Original Source: PHT Performance in Initiating and Delivery Report, September 2015 (n=44) (Original Source: Edge Research Management System). Clinical trial is defined as a: Clinical trial of an investigational medicinal product, Clinical investigation or other study of a medical device, Combined trial of an investigational medicinal product and an investigational medical device, Other clinical trial to study a novel intervention or randomised clinical trial to compare interventions in clinical practice.

**CHART 4.2 PERFORMANCE IN DELIVERING CLINICAL RESEARCH (n = 52)**



Source: PHT Performance in Initiating and Delivery Report, September 2015 (n=52) (Original Source: Edge Research Management System).

Commercial' is defined as a study both sponsored and funded by a commercial funder.

Table 4.1 shows the percentage (n) of studies approved in 15 days. PHT is now approving 100% of studies within this goal.

**TABLE 4.1 R&D APPROVAL TIMES FOR PORTFOLIO STUDIES**

	DCHFT	DHUFT	HHFT	IC	IOW	PHFT	PHT	RBCH	SCAS	SFT	SHFT	Solent	UHS
April		100% [3]	83% [6]	100% [9]	67% [3]	100% [2]	75% [4]	90% [10]		0% [1]	50% [4]	100% [5]	100% [19]
May	100% [1]	0% [1]	60% [5]	100% [6]	50% [4]	60% [5]	83% [6]	100% [4]		75% [4]	50% [2]	67% [3]	100% [6]
June	80% [5]		100% [5]	100% [4]		100% [1]	100% [12]	83% [6]	100% [1]	71% [7]			92% [13]
July	100% [1]		100% [7]	86% [7]	0% [1]	100% [4]	100% [4]	75% [4]		100% [1]		100% [1]	90% [20]
August	100% [2]	100% [1]	100% [2]	67% [6]	0% [1]	83% [6]	100% [6]	56% [6]		100% [7]	100% [4]	100% [2]	79% [14]
September	100% [3]		100% [6]	75% [4]	33% [3]	100% [2]	100% [8]	67% [3]		100% [3]	100% [1]	100% [3]	94% [18]
October													
November													
December													
January													
February													
March													

> 80% of study reviews in 15 days or less
60 ≤ x < 80% of study reviews in 15 days or less
50% of study reviews in 15 days or less

Source: Wessex CRN Performance Report, September 2015 (Original Source: NIHR Open Data Platform).

**TABLE 4.2 RESEARCH PHARMACY SERVICE MONTHLY PERFORMANCE RECORD**

Activity	Jul-15	Aug-15	Sep-15	Oct-15
No. of active CTIMPS	64*	69	70	72
No. of Stage 1 Pharmacy Notifications Received	1	1	0	1
No. of Stage 2 Pharmacy Notifications Sent	2	0	1	1
No. of amendments received	9	7	1	12
No. of items dispensed	90**	165	193	143
No. of dispensing errors	0	0	0	0
No. of deliveries received	15	18	19	20
No. of crib sheets approved	2	3	2	2
No. of SSIs attended	2	5	3	1
No. of SIVs attended	2	3	1	5
No. of SFV carried out	2	0	2	0
No. of monitoring visits	8	8	12	13
No of patients recruited by the pharmacy team	0	0	1	0
<b>Quality</b>	<b>Jul-15</b>	<b>Aug-15</b>	<b>Sep-15</b>	<b>Oct-15</b>
Percentage of WIs in date	82	82	82	82
Percentage of WIs in draft form	18	18	18	18
Percentage of pharmacy staff GCP trained	13^	13^	14^	15^

Source: PHT Clinical Trials Pharmacy service. \*oncology not included \*\*did not include oncology railway triangle items ^all pharmacy staff in the department

Key

- Stage 1 – initial notification to the Pharmacy Clinical Trial service from R&I Office of an upcoming trial requesting support
- Stage 2 - Pharmacy capability assessment returned to R&I Office
- CTIMP – Clinical Trial of an Investigational Medicinal Product
- SSI – Site Specific Information (feasibility) meeting with proposed research team
- SIV – Site Initiation Visit, performed by sponsor when our site is ready to open to recruitment
- SFV – Site Feasibility Visit
- WI – Work Instruction
- GCP – Good Clinical Practice training